

NIKHTISH ENGINEERING PVT LIMITED

Founded in 2008, is India's leading manufacturer and distributor of CBRNE Filtration Systems, Air Filters & Clean Room Validation Services. We cater to industries, namely, Pharmaceutical, Automotive, Hospitality, Dairy, Food & Beverage, Biotech, Defence, and Nuclear power plants.

An equal opportunity employer Nikhtish focuses on consistent innovation & development, especially CBRNE (Chemical, Biological, Radioactive Nuclear & Explosives) air filtration systems, and filters while ensuring quality. The manufacturing facility has been ISO 9001 compliant since 2012, and the products are tested by Standards Institute of Israel continuously in their state-of-the-art facility around the year as part of quality assurance.

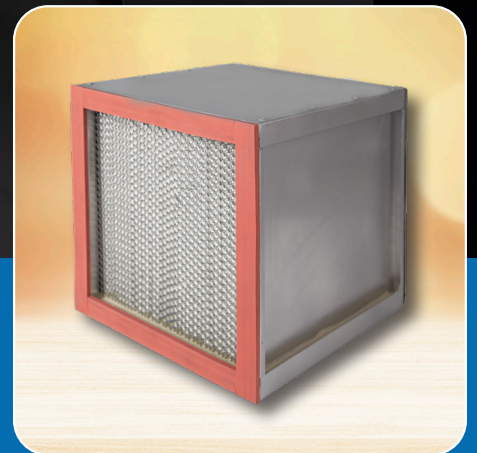
Contact Us:

Phone : +91-7722008853

Email : sales@nikhtish.com

Address : Nikhtish Engineering Pvt.Ltd, 78/1/1,
Kamthe Estate, Aditya hotel lane,
Shivane, Pune - 411023.





FINE FILTER

GLASSFIBRE DEEP PLEAT-HT (FGD-HT)

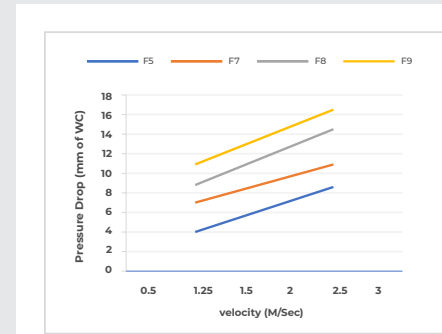
Grade: F6 to F9 OR MERV 11 to MERV 16

ISO 16890/ ASHRAE 52.2-2017/EN 779-2012

Fine Dust filters made from rigid non-corrosive metal frames with options as per customer applications with micro fine Glassfibre fire retardant media with corrugated separators that can withstand high temperatures ranging upto 350 degree celcius pleated to increase filtration area. The Filtration grades range from F6 to F9 or MERV 11-16. The filters stand out from competition in terms of their high dust holding capacity. The Fine dust filters are available in standard depths of 6" to 12" depending upon the filter face velocity. 4 sides of the filter are sealed with sealants suitable to withstand temperatures upto 350 degree celcius for better filtering efficiency.

Filter Features

- The FGD-HT series are filters made from aluminium or Stainless Steel separators in deep pleated style that can sustain high temperatures when in continuous operation, in rigid non-corrosive metal frames with micro fine fibreglass media with , allowing high air flow and low pressure drop.
- Mainly used in air handling applications where the structure or the air temperature gets upto 350 degree celcius, one stage prior to HEPA filters.
- The filter media is moisture resistant and fire retardant.
- Filter grades F6 to F9 OR MERV 11 to MERV 16.
- Tested in accordance to EN779-2012 / ISO 16890 / ASHRAE 52.2-2017.
- FGD-HT series available in various sizes & installation options to fit almost any customer requirements.



Technical Specifications

Filters Grade	EN779 Class: F6, F7, F8,F9 Eurovent: EU6,7,8,9 ASHRAE 52.2-2017 Class: MERV-11,12,13,14,15,16
Type	Glass Fibre Deep Pleated Compact Filter
Frame	Aluminium/Galvanized iron/Stainless steel
Frame Construction Type	Box / One side Flange/Double Side Flange
Media	Micro Fine Glass Fibre
Sealant	Epoxy based/Silicon HT/Ceramic/Fibre
Final Pressure Drop	500 Pa
Temperature Max	120°C/250°C/350°C
Humidity	100%
Non-Flammability Class	F1 (DIN 53438)
Gasket	Neoprene/Silicon HT
Separator	Corrugated Aluminium Hemmed Edge
Installation Options	Front Access Filter Housings
Optional Guard Mesh	Aluminium expanded/MS powder coated expanded/GI sq.weld mesh/SS sq weld mesh.
Filters Testing In Accordance	EN779-2012/ ISO16890/ASHRAE 52.2-2017



Selection Chart

(Order as per model no.)

Order no.	FGD-HT	A	B	C	D	E	F	G	H	I	J	K	L
Example no.	FGD-HT	6	GSF	33	16	B	A	AH	25	1	1	1	M

Grade	A	TYPE	B	SIZE	C	DEPTH	D	Frame Construction Type	E	MOC	F	SEPARATOR	G	NO. OF FOLDS OR POCKETS	H	GASKET	I	TEMP.	J	GUARD MESH	K	GAURD MESH MATERIAL	L
F6	6	GLASS FIBRE	GSF	305X305	33	150	16	Box	B	Aluminium	A	Corrugated Aluminium Hemmed Edge	AH	25	25	At air inlet	1	Upto 120°C	1	No Mesh	0	Aluminium Expanded	A
F7	7			610X305	63	300	18	Flange	F	GI	G					At air outlet	2	Upto 250°C	2	One Side	1	MS Powder Coated expanded	M
F8	8			610X610	66			Double Side Flange	D	Stainless Steel	S					At Both	3	Upto 350°C	3	Both Side	2	GI Sq. Weld mesh	G
F9	9																					SS 304 Weld Mesh	S

Note: Material of construction Stainless steel is mandatory for 250°C & 350°C.

Filter Class As per EN779	F6/MERV 11, 12	F7/ MERV 13	F8/MERV 14	F9/MERV 15, 16	
Filter Class as per Eurovent 4/4	EU 6	EU 7	EU 8	EU 9	
Initial Efficiency test with MPPS in %	60%≤Em<80 %	80%≤Em<90 %	90%≤Em<95 %	95%≤Em	
Initial Efficiency test with Aerosol Particle size 1.0-3.0 microns in %	60%≤Em<80 %	80%≤Em<90 %	90%≤Em<95%	95%≤Em	
W x L x D (mm)	Rated face velocity (m/s) No. Of Folds	Rate Air Flow (CMH) Rated Face Velocity (m/s)	Rated Air Flow (CMH)	INITIAL PRESSURE DROP (MM OF WC) @ RATED AIR FLOW	
305 x 305 x 150	1.25/2.5	500/850	4.8/8.6	7.0/10.9	8.8/14.5
610 x 305 x 150	1.25/2.5	850/1700	4.8/8.6	7.0/10.9	8.8/14.5
610 x 610 x 150	1.25/2.5	1700/3400	4.8/8.6	7.0/10.9	8.8/14.5
305 x 305 x 300	1.25/2.5	500/850	4.8/8.6	7.0/10.9	8.8/14.5
610 x 305 x 300	1.25/2.5	850/1700	4.8/8.6	7.0/10.9	8.8/14.5
610 x 610 x 300	1.25/2.5	1700/3400	4.8/8.6	7.0/10.9	8.8/14.5

For any customized filter, please contact us.

Applications:

